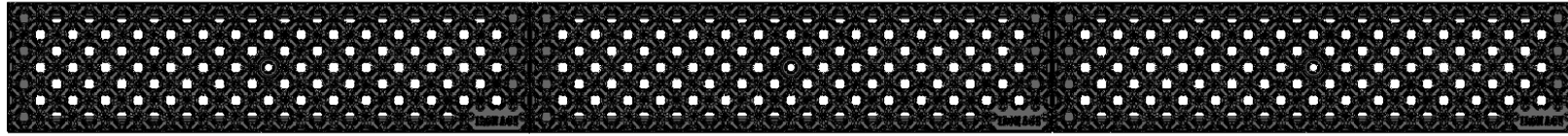
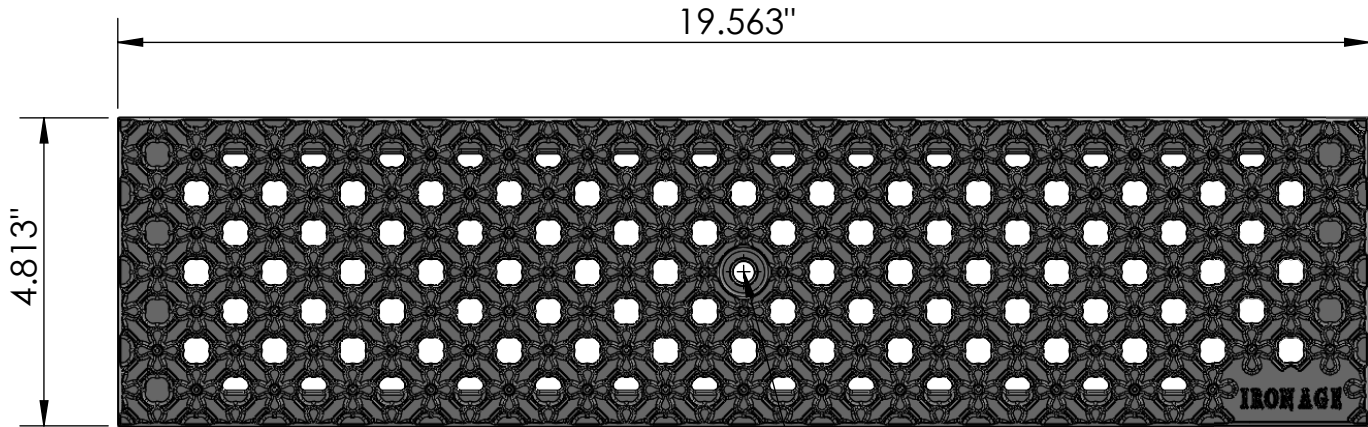


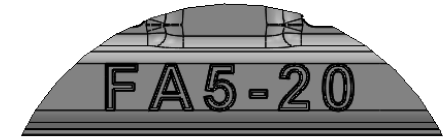
**3 ARRAY**  
scale 1:7



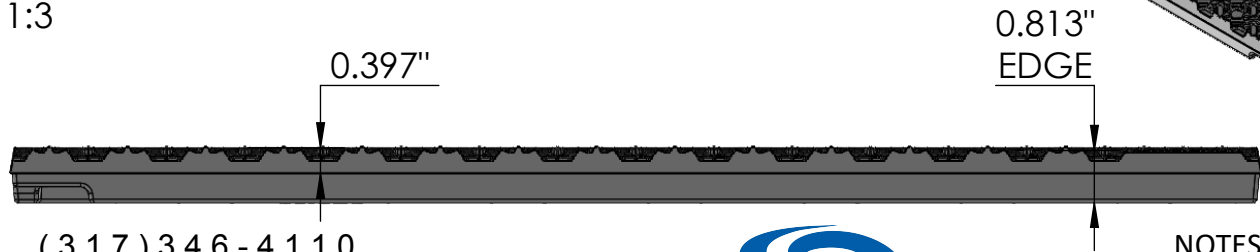
**TOP VIEW**  
scale 1:3



**CASTING-ID**  
scale 1:1



**SIDE VIEW**  
scale 1:3



5/16"-18  
Pan Head  
STD-Bolt



**ISO-VIEW**  
scale 1:5

(317) 346-4110  
www.drainagesolutionsinc.com




**NOTES:**

1. ADA Compliant: No thru openings greater than 1/2".
2. Ships in pieces: 1
3. Due to casting inconsistencies, all dimensions are nominal.

Made in USA ©2023 Iron Age Designs

**Flower Grid 5" x 20" Trench Grate**

 <b>IRON AGE</b> <b>DESIGNS</b> Telephone 206.276.0925 www.ironagegrates.com	<b>Material:</b> Ductile Iron 65-45-12 <b>Finish:</b> Raw <b>Fits:</b> ABT® PolyDrain® ACO™ K100, K100S, KS100	<b>Weight:</b> 12.00 lbs. <b>Edge:</b> 0.813" <b>Product ID:</b> FA5-20I21	<b>Free Drain Area:</b> 12.90 in./sq., or 13.71 % <b>Flow Rate:</b> 16.90 GPM, or .037 CuFt./sec. <b>Drawing Name:</b> 02_FlowerGrid_A_5x20_TrenchGrate	<b>By:</b> MS <b>Checked:</b> MS <b>Date:</b> 5-16-24 <b>® Registration:</b> Pending <b>Scale:</b> NTS
---	---	--	---	---